

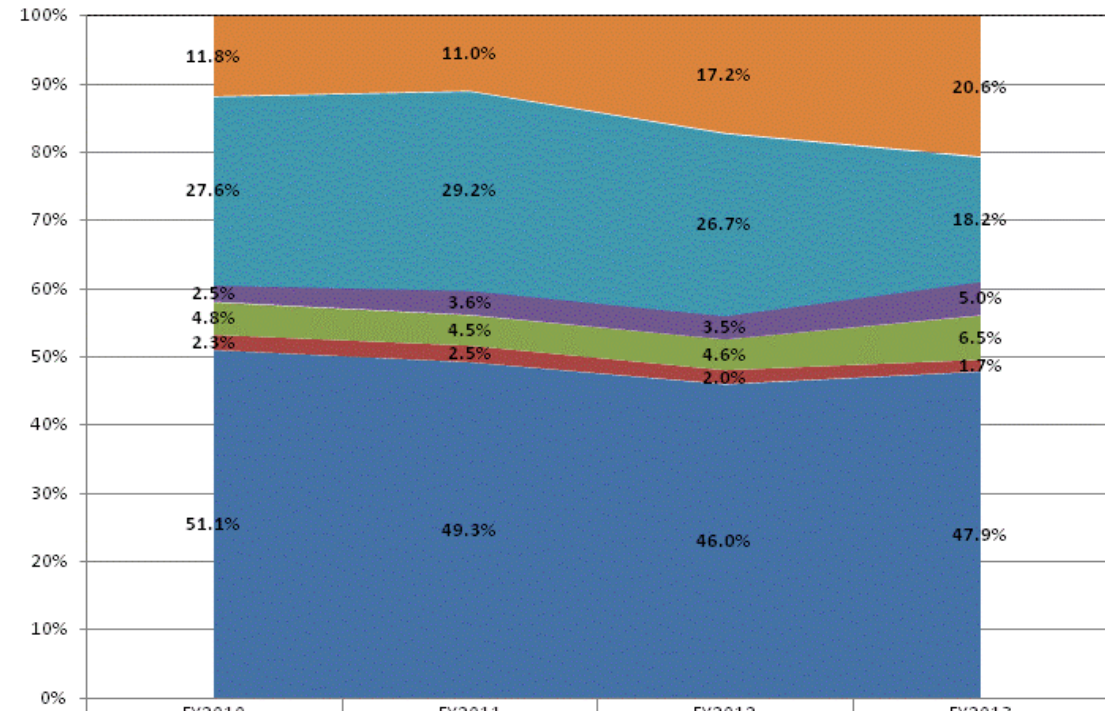
School Corporation Expenditures by Expenditure Type
Biannual Financial Report Data July 2012 - June 2013
Clinton Central School Corp (1150)

Clinton Central School Corp (1150)

	FY 2006	FY06 % of Total Exp	FY 2009	FY09 % of Total Exp	FY 2012	FY12 % of Total Exp	FY 2013	FY13 % of Total Exp
Student Academic Achievement	\$4,791,368	52.7%	\$6,072,279	57.5%	\$5,778,568	46.0%	\$5,487,693	47.9%
Student Instructional Support	\$741,985	8.2%	\$791,195	7.5%	\$832,939	6.6%	\$947,784	8.3%
Overhead and Operational	\$2,389,379	26.3%	\$2,578,527	24.4%	\$3,793,120	30.2%	\$2,660,451	23.2%
Nonoperational	\$1,161,323	12.8%	\$1,111,184	10.5%	\$2,154,021	17.2%	\$2,364,819	20.6%
Grand Total	\$9,084,055		\$10,553,185		\$12,558,647		\$11,460,748	

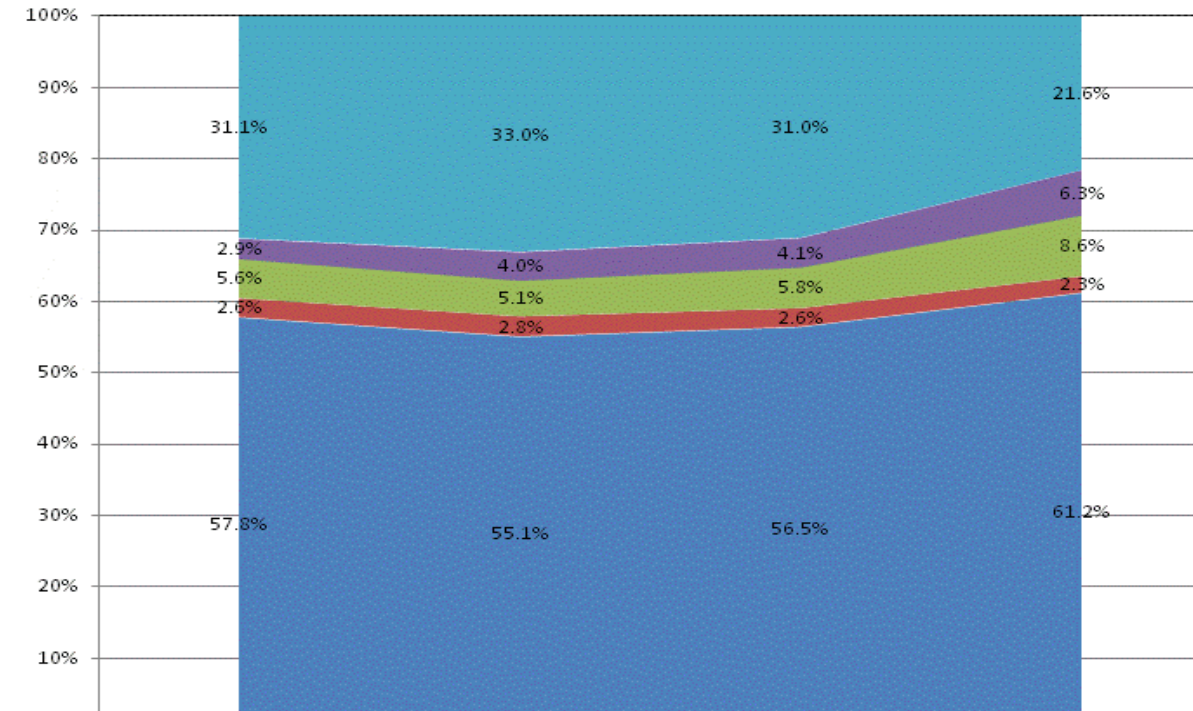
	FY 2006	FY 2009	FY 2012	FY 2013
Student Instructional Expenditures (Academic Achievement plus Support)	60.9%	65.0%	52.6%	56.2%

All Expenditures



	FY2010	FY2011	FY2012	FY2013
Non-Operational	11.8%	11.0%	17.2%	20.6%
Other Overhead and Operational	27.6%	29.2%	26.7%	18.2%
Corporation Administration	2.5%	3.6%	3.5%	5.0%
School Administration	4.8%	4.5%	4.6%	6.5%
Other Student Instructional Support	2.3%	2.5%	2.0%	1.7%
Student Academic Achievement	51.1%	49.3%	46.0%	47.9%

Operational Expenditures Only



	FY2010	FY2011	FY2012	FY2013
Other Overhead and Operational	31.1%	33.0%	31.0%	21.6%
Corporation Administration	2.9%	4.0%	4.1%	6.3%
School Administration	5.6%	5.1%	5.8%	8.6%
Other Student Instructional Support	2.6%	2.8%	2.6%	2.3%
Student Academic Achievement	57.8%	55.1%	56.5%	61.2%

School Corporation Expenditures by Expenditure Type
Biannual Financial Report Data July 2012 - June 2013
Clinton Central School Corp (1150)

Account	FY 2006	FY 2009	FY 2012	FY 2013	Increase from FY 2006	Increase from FY 2009	Increase from previous year
Student Academic Achievement							
11050 Regular Programs; Full Day Kindergarten	\$0	\$139,626	\$227,783	\$236,601	N/A	69%	4%
11100 Regular Programs; Elementary	\$1,538,436	\$2,324,365	\$2,198,553	\$1,967,453	28%	-15%	-11%
11300 Regular Programs; High School	\$1,296,866	\$2,195,751	\$1,882,238	\$1,673,134	29%	-24%	-11%
11350 Regular Programs; High School; Academic Honors Diploma	\$725	\$0	\$0	\$0	-100%	N/A	N/A
11420 Vocational Education; Agriculture B	\$103,690	\$141,275	\$155,613	\$157,898	52%	12%	1%
11440 Vocational Education; Health Occupations	\$0	\$0	\$67,071	\$67,156	N/A	N/A	0%
11450 Vocational Education; Consumer and Homemaking	\$33,881	\$40,687	\$64,469	\$61,688	82%	52%	-4%
11470 Vocational Education; Business Education	\$25,967	\$45,638	\$68,308	\$76,755	196%	68%	12%
11480 Vocational Education; Industrial Education A	\$0	\$0	\$82,434	\$12,073	N/A	N/A	-85%
11510 Vocational Education; Cooperative Education	\$12,640	\$15,265	\$0	\$0	-100%	-100%	N/A
11520 Vocational Education; Area School Participation	\$19,622	\$11,956	\$2,705	\$85	-100%	-99%	-97%
11590 Other Vocational Education Programs	\$0	\$2,811	\$0	\$0	N/A	-100%	N/A
11630 Regular Programs; Alternative Education Programs; High School	\$0	\$0	\$7,328	\$0	N/A	N/A	-100%
12150 Gifted And Talented; High Ability Student Programs	\$0	\$20,779	\$32,779	\$33,831	N/A	63%	3%
12210 Mental Disabilities; Mild Mental Disabilities	\$75,599	\$190,018	\$116,580	\$152,363	102%	-20%	31%
12310 Physical Impairment; Orthopedic Impairment	\$18,065	\$3,273	\$8,317	\$20,553	14%	> 500%	147%
12340 Physical Impairment; Hearing Impairment	\$0	\$0	\$0	\$41,567	N/A	N/A	N/A
12350 Physical Impairment; Homebound	\$958	\$14,707	\$20,136	\$5,951	> 500%	-60%	-70%
12510 Culturally Different; Communication Disorders	\$31,776	\$44,504	\$42,723	\$43,784	38%	-2%	2%
12610 Learning Disability	\$166,354	\$208,448	\$314,900	\$362,315	118%	74%	15%
12810 Special Education Preschool	\$215	\$31,560	\$0	\$67,040	> 500%	112%	N/A
12900 Other Special Programs	\$0	\$10,356	\$0	\$0	N/A	-100%	N/A
14100 Summer School Programs; Elementary	\$0	\$0	\$0	\$0	N/A	N/A	N/A
14300 Summer School Programs; High School	\$9,653	\$1,407	\$8,325	\$0	-100%	-100%	-100%
16200 Preventive Remediation	\$26,397	\$38,296	\$21,526	\$18,742	-29%	-51%	-13%
17300 Payments to Other Governmental Units Within State; Area Vocational School (Participa	\$0	\$16,779	\$27,456	\$82,246	N/A	390%	200%
17400 Payments to Other Governmental Units Within State; Joint Services and Supply; Speci	\$84,486	\$183,025	\$59,026	\$127,563	51%	-30%	116%
22110 Improvement of Instruction; Service Area Direction	\$0	\$0	\$1,500	\$0	N/A	N/A	-100%
22120 Improvement of Instruction; Instruction and Curriculum Development	\$0	\$10,200	\$0	\$0	N/A	-100%	N/A
22190 Improvement of Instruction; Other Improvement of Instructional Services	\$0	\$29,794	\$22,665	\$38,029	N/A	28%	68%
22220 Library/Media Services; School Library	\$115,352	\$83,382	\$134,747	\$96,412	-16%	16%	-28%
22230 Library/Media Services; Audiovisual	\$0	\$0	\$0	\$0	N/A	N/A	N/A
22320 Instruction, Related Technology; Student Learning Centers	\$0	\$0	\$6,500	\$6,500	N/A	N/A	0%
22330 Instruction, Related Technology; Systems Analysis and Planning	\$0	\$0	\$0	\$20,839	N/A	N/A	N/A
22350 Instruction, Related Technology; Systems Operations	\$0	\$0	\$17,330	\$66,140	N/A	N/A	282%
22360 Instruction, Related Technology; Network Support	\$0	\$147,653	\$11,490	\$325	N/A	-100%	-97%
22370 Instruction, Related Technology; Hardware Maintenance and Support	\$0	\$0	\$2,347	\$2,680	N/A	N/A	14%
22380 Instruction, Related Technology; Professional Development for Instruction, Focused Tr	\$0	\$0	\$0	\$199	N/A	N/A	N/A
25520 Textbooks for Rent or Resale; Textbooks, Workbooks, and Repairs	\$85,759	\$120,723	\$173,721	\$47,769	-44%	-60%	-73%
25540 Textbooks for Rent or Resale; Other Textbook Rental Service	\$76	\$0	\$0	\$0	-100%	N/A	N/A
26497 2007 Account Code - Teachers Retirement Fund	\$225,894	\$0	\$0	\$0	N/A	N/A	N/A
Student Academic Achievement Total	\$3,872,412	\$6,072,279	\$5,778,568	\$5,487,693	42%	-10%	-5%
Student Instructional Support							
21220 Guidance Services; Counseling Services	\$134,498	\$208,116	\$217,359	\$149,942	11%	-28%	-31%
21340 Health Services; Nurse Services	\$29,844	\$48,761	\$37,531	\$39,141	31%	-20%	4%
21430 Psychological Counseling	\$0	\$0	\$1,795	\$9,603	N/A	N/A	435%
21590 Speech Pathology and Audiology Services; Other Speech Pathology and Audiology Se	\$1,050	\$0	\$0	\$0	-100%	N/A	N/A
24100 Office of The Principal	\$415,725	\$522,120	\$576,253	\$749,099	80%	43%	30%
24900 Other Support Services, School Administration	\$0	\$12,198	\$0	\$0	N/A	-100%	N/A

School Corporation Expenditures by Expenditure Type
Biannual Financial Report Data July 2012 - June 2013
Clinton Central School Corp (1150)

Account	FY 2006	FY 2009	FY 2012	FY 2013	Increase from FY 2006	Increase from FY 2009	Increase from previous year
Student Instructional Support Total	\$581,117	\$791,195	\$832,939	\$947,784	63%	20%	14%
Overhead and Operational							
23110 Board of Education; Service Area Direction	\$26,488	\$11,799	\$7,586	\$24,407	-8%	107%	222%
23120 Board of Education; Service Area Assistants	\$14,754	\$54,764	\$44,483	\$56,094	280%	2%	26%
23150 Board of Education; Legal Services	\$11,684	\$9,651	\$45,458	\$39,459	238%	309%	-13%
23160 Board of Education; Promotion Expenses	\$0	\$0	\$0	\$1,896	N/A	N/A	N/A
23190 Board of Education; Other Governing Body Services	\$6,241	\$4,529	\$4,908	\$12,344	98%	173%	152%
23210 Executive Administration; Office of The Superintendent	\$112,897	\$124,630	\$210,376	\$235,375	108%	89%	12%
23220 Executive Administration; Community Relations	\$2,386	\$21,584	\$13,238	\$6,369	167%	-70%	-52%
23230 Executive Administration; Staff Relations and Negotiations	\$0	\$0	\$212	\$0	N/A	N/A	-100%
23290 Executive Administration; Other Executive Administration Services	\$925	\$0	\$0	\$0	-100%	N/A	N/A
25150 Fiscal Services; Payroll Services	\$61,974	\$18,470	\$0	\$0	-100%	-100%	N/A
25160 Fiscal Services; Financial Accounting	\$0	\$225	\$436	\$662	N/A	194%	52%
25180 Fiscal Services; Property Accounting	\$0	\$0	\$0	\$4,500	N/A	N/A	N/A
25191 Other Fiscal Services; Refund of Revenue	\$0	\$0	\$149	\$1,684	N/A	N/A	> 500%
25195 Other Fiscal Services; Bank Account Service Charge	\$0	\$0	\$3,168	\$3,033	N/A	N/A	-4%
25600 Public Information Services	\$0	\$0	\$2,700	\$2,700	N/A	N/A	0%
25790 Personnel Services; Other Professional Services	\$0	\$0	\$0	\$0	N/A	N/A	N/A
25810 Administrative Technology Services; Technology Services Supervision And Administra	\$0	\$0	\$39,615	\$85,089	N/A	N/A	115%
25840 Administrative Technology Services; Systems Operations	\$0	\$0	\$16,575	\$37,767	N/A	N/A	128%
25850 Administrative Technology Services; Network Support	\$0	\$0	\$37,162	\$37,154	N/A	N/A	0%
25860 Administrative Technology Services; Hardware Maintenance And Support	\$0	\$0	\$353	\$0	N/A	N/A	-100%
25920 Ditch Assessments	\$111	\$106	\$104	\$91	-18%	-14%	-13%
25990 Other Support Services, Central	\$2,906	\$123,502	\$8,627	\$21,484	> 500%	-83%	149%
26200 Operation and Maintenance of Plant Services; Maintenance of Buildings	\$608,642	\$701,621	\$651,375	\$672,685	11%	-4%	3%
26300 Operation and Maintenance of Plant Services; Maintenance of Grounds	\$0	\$0	\$1,428	\$2,795	N/A	N/A	96%
26400 Operation and Maintenance of Plant Services; Maintenance of Equipment	\$107,343	\$149,657	\$300,886	\$44,281	-59%	-70%	-85%
26495 2007 Account Code - Support Services, Central ; Other Staff Services ; Official Bonds	\$500	\$0	\$0	\$0	N/A	N/A	N/A
26500 Operation and Maintenance of Plant Services; Vehicle Maintenance (not buses)	\$1,177	\$0	\$0	\$0	-100%	N/A	N/A
26700 Operation and Maintenance of Plant Services; Insurance	\$95,508	\$42,351	\$1,069,549	\$54,684	-43%	29%	-95%
26800 Operation and Maintenance of Plant Services; Other Operation and Maintenance of Pla	\$13,466	\$11,109	\$10,121	\$4,073	-70%	-63%	-60%
27100 Student Transportation; Vehicle Operation	\$181,470	\$367,245	\$303,230	\$304,713	68%	-17%	0%
27300 Student Transportation; Vehicle Servicing and Maintenance	\$148,405	\$245,811	\$255,046	\$277,737	87%	13%	9%
27400 Student Transportation; Purchase of School Buses	\$118,935	\$210,034	\$259,338	\$187,554	58%	-11%	-28%
27500 Student Transportation; Insurance on Buses	\$29,398	\$13,589	\$14,814	\$16,506	-44%	21%	11%
27700 Student Transportation; Contracted Transportation Services	\$0	\$6,403	\$8,869	\$2,502	N/A	-61%	-72%
27900 Student Transportation; Other Student Transportation Services	\$32,728	\$448	\$0	\$0	-100%	-100%	N/A
31200 Food Services Operations; Food Preparation and Dispensing	\$161,758	\$240,345	\$253,841	\$275,391	70%	15%	8%
31300 Food Services Operations; Food Delivery	\$169,835	\$196,677	\$211,889	\$232,211	37%	18%	10%
31400 Food Services Operations; Food Purchases	\$0	\$20,900	\$0	\$0	N/A	-100%	N/A
31900 Other Food Services	\$28,719	\$3,075	\$17,585	\$15,214	-47%	395%	-13%
Overhead and Operational Total	\$1,938,249	\$2,578,527	\$3,793,120	\$2,660,451	37%	3%	-30%
Nonoperational							
33100 Community Service Operations; Direction of Community Services	\$180	\$0	\$0	\$0	-100%	N/A	N/A
33200 Community Recreation	\$0	\$0	\$0	\$0	N/A	N/A	N/A
33400 Athletic Coaches	\$149,445	\$161,431	\$202,523	\$203,722	36%	26%	1%
33990 Other Community Services; Other	\$0	\$1,710	\$0	\$0	N/A	-100%	N/A
41000 Facilities Acquisition and Construction; Land Acquisition and Development	\$425	\$0	\$0	\$0	-100%	N/A	N/A
43000 Facilities Acquisition and Construction; Professional Services	\$18,350	\$17,468	\$47,917	\$66,024	260%	278%	38%

School Corporation Expenditures by Expenditure Type
Biannual Financial Report Data July 2012 - June 2013
Clinton Central School Corp (1150)

Account	FY 2006	FY 2009	FY 2012	FY 2013	Increase from FY 2006	Increase from FY 2009	Increase from previous year
45100 Building Acquisition, Construction and Improvements	\$96,541	\$336,044	\$301,144	\$213,393	121%	-36%	-29%
45200 Building Acquisition, Construction and Improvement; Energy Savings Contracts	\$0	\$0	\$115,253	\$345,759	N/A	N/A	200%
45400 Building Acquisition, Construction and Improvement; Sports Facilities	\$39,464	\$2,086	\$4,890	\$27,950	-29%	> 500%	472%
45500 Facilities Acquisition and Construction; Rent of Buildings, Facilities, and Equipment	\$174	\$696	\$0	\$0	-100%	-100%	N/A
46000 Facilities Acquisition and Construction; Purchase of Moveable Equipment	\$0	\$5,533	\$0	\$0	N/A	-100%	N/A
47000 Facilities Acquisition and Construction; Purchase of Mobile or Fixed Equipment	\$316,069	\$133,800	\$30,533	\$16,096	-95%	-88%	-47%
49000 Facilities Acquisition and Construction; Other Facilities Acquisition and Construction	\$0	\$0	\$0	\$0	N/A	N/A	N/A
51100 Debt Services; Principal on Debt; Bonds	\$357,061	\$353,000	\$200,000	\$200,000	-44%	-43%	0%
51500 Debt Services; Principal on Debt; Bond Anticipation Notes	\$139,888	\$96,418	\$94,711	\$96,955	-31%	1%	2%
52100 Debt Services; Interest on Debt; Bonds	\$0	\$0	\$1,154,900	\$1,193,920	N/A	N/A	3%
53450 Debt Services; Lease Rental; Other ; Interest	\$0	\$0	\$25	\$0	N/A	N/A	-100%
60700 Nonprogramed Charges; Scholarships	\$1,600	\$3,000	\$2,125	\$1,000	-38%	-67%	-53%
Nonoperational Total	\$1,119,197	\$1,111,184	\$2,154,021	\$2,364,819	111%	113%	10%
Prorated By Fund							
26491 2007 Account Code - PERF	\$32,882	\$0	\$0	\$0	N/A	N/A	N/A
26492 2007 Account Code - Social Security	\$374,609	\$0	\$0	\$0	N/A	N/A	N/A
26493 2007 Account Code - Workmen's Compensation	\$11,810	\$0	\$0	\$0	N/A	N/A	N/A
26494 2007 Account Code - Group Insurance	\$1,102,705	\$0	\$0	\$0	N/A	N/A	N/A
26496 2007 Account Code - Unemployment Compensation	\$175	\$0	\$0	\$0	N/A	N/A	N/A
26498 2007 Account Code - Severance / Early Retirement Pay	\$50,898	\$0	\$0	\$0	N/A	N/A	N/A
Prorated By Fund Total	\$1,573,079	\$0	\$0	\$0	N/A	N/A	N/A